

COMPANY PROFILE



# Contents

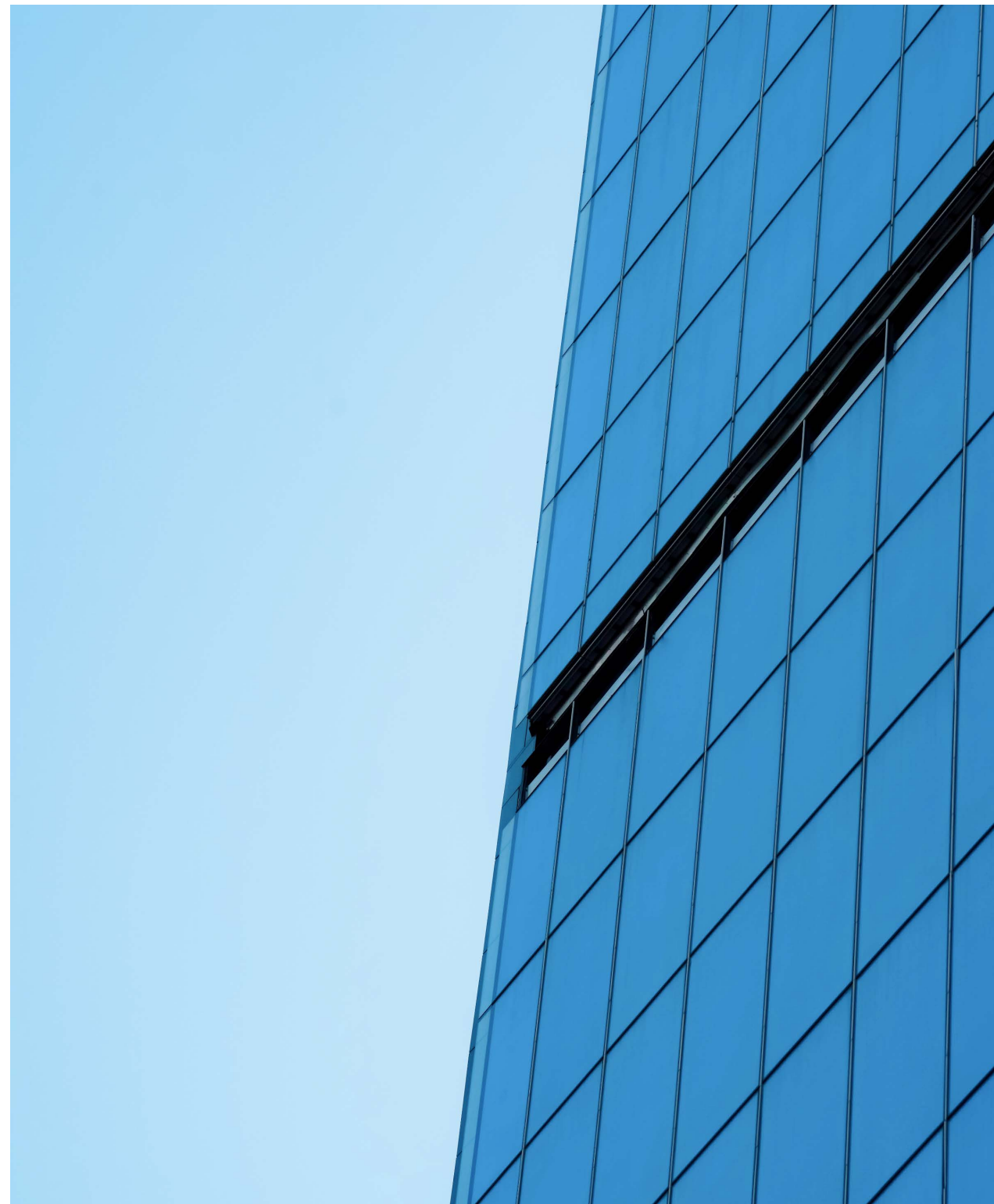
1. About Zenith .....	2
2. Our Timeline .....	4
3. Our Global Reach .....	5
4. The Zenith Group .....	6
5. Zenith's Certifications .....	7
6. Research and Development .....	9
7. Our Business Areas .....	13
8. Building Portfolio .....	14
9. Zenith's Capabilities .....	15
10. Project Reference .....	17

# About Zenith

## Perfecting plans and projects since 2000

Zenith (PMS) Limited is a façade design and contracting company dedicated to operating at the frontiers of construction technology. We are experts in contemporary façade design, engineering, R&D, and project management. Our range of expertise includes: Roofing, Façade, Retrofitting, Alterations and Additions, Structural Steel, and Modular Integrated Construction (MiC), amongst others.

At Zenith, we believe that buildings are paramount for the daily workings of society. Buildings do not just fulfill structural functions, but they also aggregate to make up the face of a city. The bulk of Zenith's work relates to the "face" or the "armour" of a building, and this is a responsibility that we execute to the highest standards of craftsmanship.





# About Zenith

## **As a company, Zenith upholds a human forward philosophy**

Buildings are made by people for other people, and the bricks that make up a building are placed there by individual hands - thus we uphold only the highest safety standards to safeguard both the quality of our work and the people who make it happen. By operating with such structural integrity, Zenith is able to function as an exceptional team to ensure our client's needs are met and exceeded in all aspects from aesthetics to functionality.

# Our Timeline

Key highlights of Zenith's history since the company's inception

2000

## Humble beginnings

Zenith (ARP) Limited, a project management firm, was established.

2009

## Venturing into the Middle East

Partnered with a top-tier Chinese curtain wall company for business development and project management in the Middle East market.

2011

## Expanding our Horizons

Zenith's business scope was extended to include external façade design and contracting.

2011

## A Change of Name

A new company name, Zenith (PMS) Limited, was adopted.

2016

## Setting our Roots across Asia

Zenith set up physical offices in both Hong Kong and the Union of Myanmar to meet rising demands.

2019

## Fireproof Roofing Systems

Developed Zenloc, a high performing non-combustible roofing system approved by the Hong Kong Airport Authority and Buildings Department.

2020

## Conquering the Pandemic

Constructed the Penny's Bay Quarantine Centre in Hong Kong using 857 (MiC) modular containers within an unprecedented 90 days.



Zenith's Hong Kong office in 2018



Expansion of Zenith's Hong Kong office in 2021

# Our Global Reach

Since the company's inception two decades ago, Zenith's client-focused approach has helped build up the company's reputation on a global scale.

From Papua New Guinea to Alaska, Zenith's expertise was sought for collaborative partnerships with developers and construction companies from over 10 countries worldwide. To meet the rising demand for our build contracting services, Zenith's office locations have expanded internationally to include Hong Kong, Myanmar, Cambodia, and Zhuhai, China.

- Zenith's Team Experience
- **Zenith's Completed Projects**
- **Zenith's New Venture**



# The Zenith Group

 **ZENiTH** 鼎新雙翼 **Zenith (PMS) Ltd.**

Zenith-PMS Contracting (Cambodia) Co., Ltd.

Zenith-PMS Contracting (Myanmar) Co., Ltd.

珠海市十洋建筑科技有限公司

 **ZiM** Zenith Integrated Modular Ltd.

**T+H** T&H Management Consultant Co., Ltd.

Zenith Leidenford AquaTech Co., Ltd.

# Zenith's Certifications

Zenith has achieved the following certificates in recognition of our high standards of quality and safety.



## The British Standards Institution (BSI)

Founded in 1901, BSI is a one of the largest certification bodies worldwide with over 80,000 clients. BSI produces technical standards for a wide range of services and products; they also audit and issue international management systems standards. Zenith's ISO certifications are issued by BSI.

### The International Organization for Standardization (ISO)

ISO is an international standard development organization comprising of representatives from the national standards organizations of 140 member countries.

#### ISO 9001

The ISO 9001 standard is based on quality management system principles including customer focus, leadership, people engagement, process approach, continual improvement, evidence-based decision making, and relationship management. ISO 9001 ensures clients can obtain consistent, high quality products and/or services.

#### ISO 14001

The ISO 14001 standard maps out a framework for effective environmental management system. It provides assurance to both internal employees to external stakeholders and clients that environmental impact is constantly being assessed and improved.

#### ISO 45001

The ISO 45001 standard is developed to ensure good occupational health and safety management system (OH&S). It enables organizations to proactively assess and improve its OH&S performance in terms of employee safety, reduced workplace risks, and better working conditions.

BSI is accredited by 20 local and international bodies, including:



American Society for Quality National Accreditation Board LLC (ANAB)



Raad voor Accreditatie (RvA) in the Netherlands



United Kingdom Accreditation Service (UKAS)



Hong Kong Accreditation Service (HKAS)



China National Accreditation Service for Conformity Assessment (CNAS)

# Zenith's Certifications



S03 Curtain Wall - C200067  
 註冊專門行業承造商制度  
 Registered Specialist  
 Trade Contractors Scheme

## Construction Industry Council Registered Specialist Trade Contractors Scheme

Zenith is a Registered Specialist Trade Contractor (Class 2) recognized by the Hong Kong government under the establishment of the Construction Industry Council (CIC).



Zenith (PMS) Ltd. Myanmar Certificate of Incorporation



Zenith (PMS) Ltd. Cambodia Certificate of Incorporation



Zenith (PMS) Ltd. Cambodia Certificate of License

# Research and Development

## Creating New Technologies for Timeless Buildings

Zenith believes in innovating creative engineering technologies. We are constantly expanding Zenith's Research and Development department to come up with efficient solutions for modern buildings.



# Research and Development



Zenloc is a non-combustible roofing technology developed for the Hong Kong Airport Authority and Buildings Department. Apart from meeting the most stringent requirements for fire safety, Zenloc also performs excellently in both structural and acoustic tests against natural elements of rain and wind.



A stainless-steel green roofing system developed using German technology. Zokodach enables better thermal reduction, energy conservation, water management, and ecological benefits compared to conventional roofing systems.



Tock is an external acoustic panel system comprising of 3mm aluminium panels. Its stellar sound absorption qualities was tested to have a Noise Reduction Coefficient of 0.80 (ASTM C423-17).



# Research and Development



## Zenith Integrated Modular Ltd. (ZiM)

ZiM is Zenith's fully owned subsidiary that specializes in "Modular Integrated Construction" (MiC), an innovative modular construction method recognized by the HKSAR government. MiC utilizes pre-finished modules for final site assembly and possesses great potential to increase productive output and sustainability due to minimized on-site activity and reduced construction waste.

ZiM focuses on design-and-build contracts with turnkey flexibilities for the design, engineering, fabrication, and installation of multi-storey modular units for both offices and residences. These modular units are fully integrated with architectural/structural components and MEP that adheres to the highest standards of specifications and fire safety.

# Research and Development

## Zenith Leidenford AquaTech Co., Ltd. (ZLA)

ZLA is a joint-venture with Leidenford, a R&D team from the City University of Hong Kong. ZLA focuses on innovative and sustainable water-harvesting technology for applications in both industry and consumer products. ZLA has developed the first Fog-Powered Green Generator to harvest atmospheric moisture to counter the global water crisis.

# Our Business Areas

Zenith offers our clients a wide range of design-engineering services including project planning, management, procurement, sourcing, design, installation, and quality inspection. The following is a non-exhaustive list of what Zenith offers to the market as a specialist contracting company.



## Design

- System & Conceptual Development
- Shop Drawings
- Local Statutory Submissions
- Engineering and Production Drawings
- BIM and Parametric 3D modelling



## Project Management

- Project and Progress Tracking
- Coordination
- Logistics and Delivery of Materials
- On-site Monitoring



## Production

- Long-term Strategy Partner Factory
- Vast Local Supply Network in China
- In-house Quality Control Team



## Installation

- Management Personnel
- Experienced Safety Officer
- Skilled Labour
- Local Know-how and Expertise

# Building Portfolio



Storefronts



Student  
Dormitories



Malls



Quarantine  
Centres



Beach  
Houses



Sports  
Parks



Hotels



Offices and  
Administrative  
Buildings



Residences



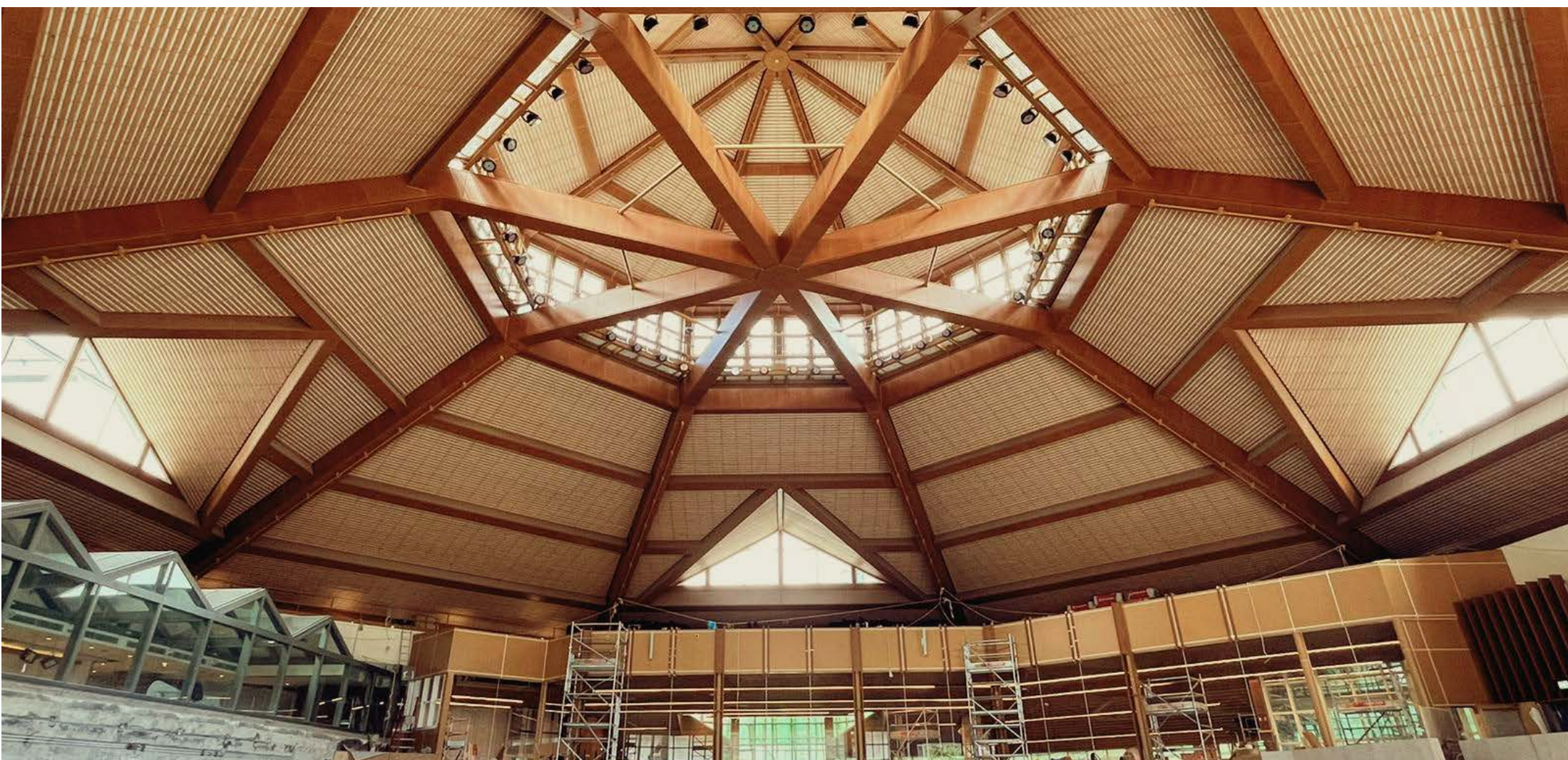
Hospitals



Airports



Cultural  
Buildings



## Zenith's Capabilities

From roofing to innovative wall systems, we specialize in architectural products for building envelopes that are designed to take the test of time. See the following for the full range of our expertise.

# Zenith's Capabilities

## Our Construction Services

As a specialist design and build contracting company, Zenith is able to curate construction services according to the client's needs and specifications



### Façade

- Curtain wall systems
- Glass wall systems
- Metal features
- Skylights
- Metal cladding systems
- Glass and metal balustrades
- Glass canopy
- ETFE canopy

#### Alterations and Additions (A&A)

- Curtain wall replacement and upgrade
- Storefront construction



### Retrofitting

- Luxury decoration features
- Interior fit-out



### Structural Steelwork

- Metal and ETFE canopy
- External Staircase
- Complex structures



### Modular Integrated Construction (MiC)

- Multi-storey temporary housings
- Customized office buildings
- Site project offices
- Stand-alone pods



### Roofing

- Composite panel roofing systems
- Non-combustible standing seam roofing systems
- Stainless steel roofing system (Green Roof)

# Project Reference





# P0001

Window, Window Wall, Louvre and Glass Balustrade for Proposed Residential Development at Tseng Choi Street, Hong Kong

---

<b>Property Name</b>	T Plus
<b>Location</b>	TMTL499, Tseng Choi Street, Tuen Mun, New Territories, Hong Kong
<b>Client</b>	Champ Success Development Ltd. / Chun Wo Property Development Ltd.
<b>Architect</b>	C-Arch Design Consultant Ltd.
<b>Structural</b>	Paul Wong Consulting Engineers Ltd.
<b>Quantity</b>	6,700 (m <sup>2</sup> )
<b>Project Date</b>	2016 - 2018

---



**Job Scope**

Design, Fabrication, Supply and Installation of Window, Window Wall, Automatic Mechanical Acoustic Window, Doors, Louvre, Glass/Metal Balustrade, Glass/Metal Canopy and Acoustic Aluminium Cladding

# P0004

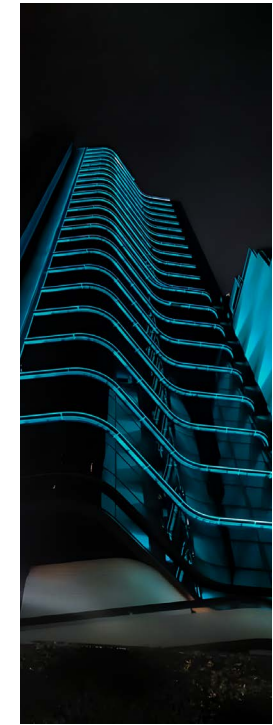
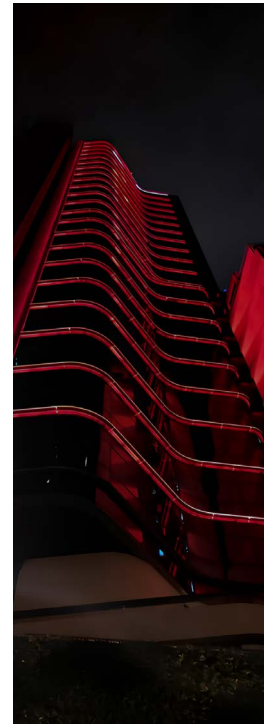
Redevelopment of Office Building at  
Queen's Road Central and Wellington  
Street, Hong Kong

---

<b>Property Name</b>	152 Queen's Road Central
<b>Location</b>	No. 152-156 Queen's Road Central and No. 103-107 Wellington Street, Central, Hong Kong
<b>Client</b>	First Melody Ltd.
<b>Architect</b>	Ma & Fong & Associates Ltd.
<b>Structural</b>	Leadtops Raymond Ltd.
<b>Quantity</b>	3,000 (m <sup>2</sup> )
<b>Project Date</b>	2017 - 2019

---





**Job Scope**

Design, Fabrication, Supply and Installation of Unitized Curtain Wall, Stick Curtain Wall, Louvre, Aluminium Cladding, Glass Balustrade, Glass Canopy, Schuco Bi-folding Doors, Stone Cladding and LED Façade Lighting



# P0009

Shopfront Fitting-Out for  
Edition MO & Co and MO & Co

---

<b>Location</b>	Shop 1088, 1/F, Elements, Kowloon, Hong Kong; Shop F43, Popcorn, Tseung Kwan O, New Territories, Hong Kong
<b>Client</b>	EPO Fashion Group
<b>Quantity</b>	85 and 87 (m <sup>2</sup> )
<b>Project Date</b>	2018

---



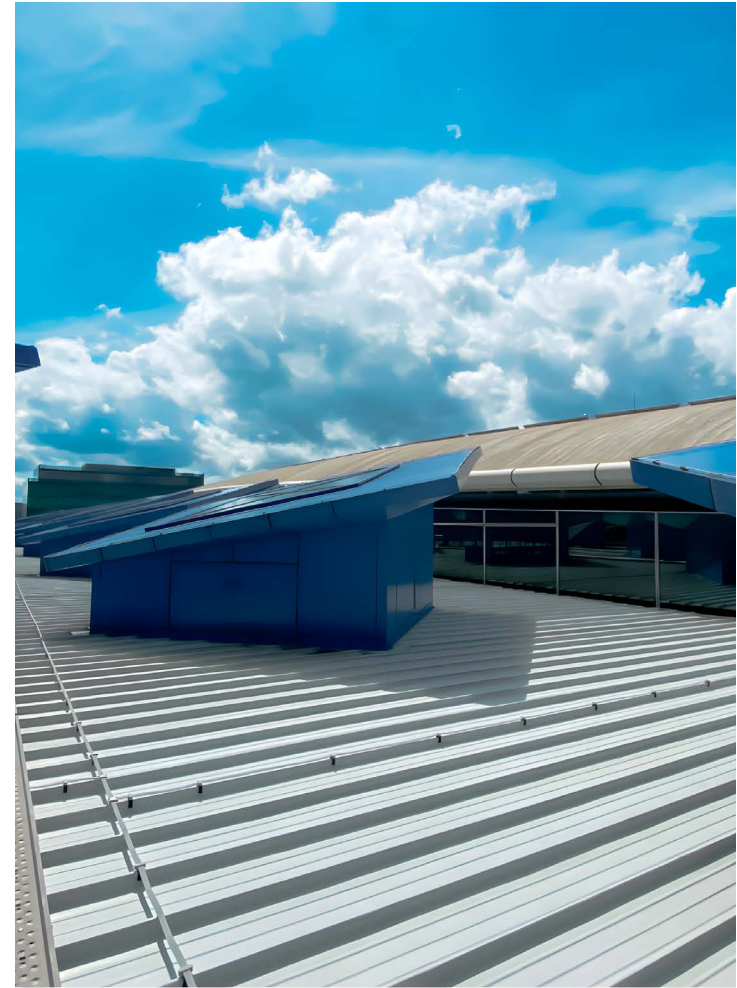
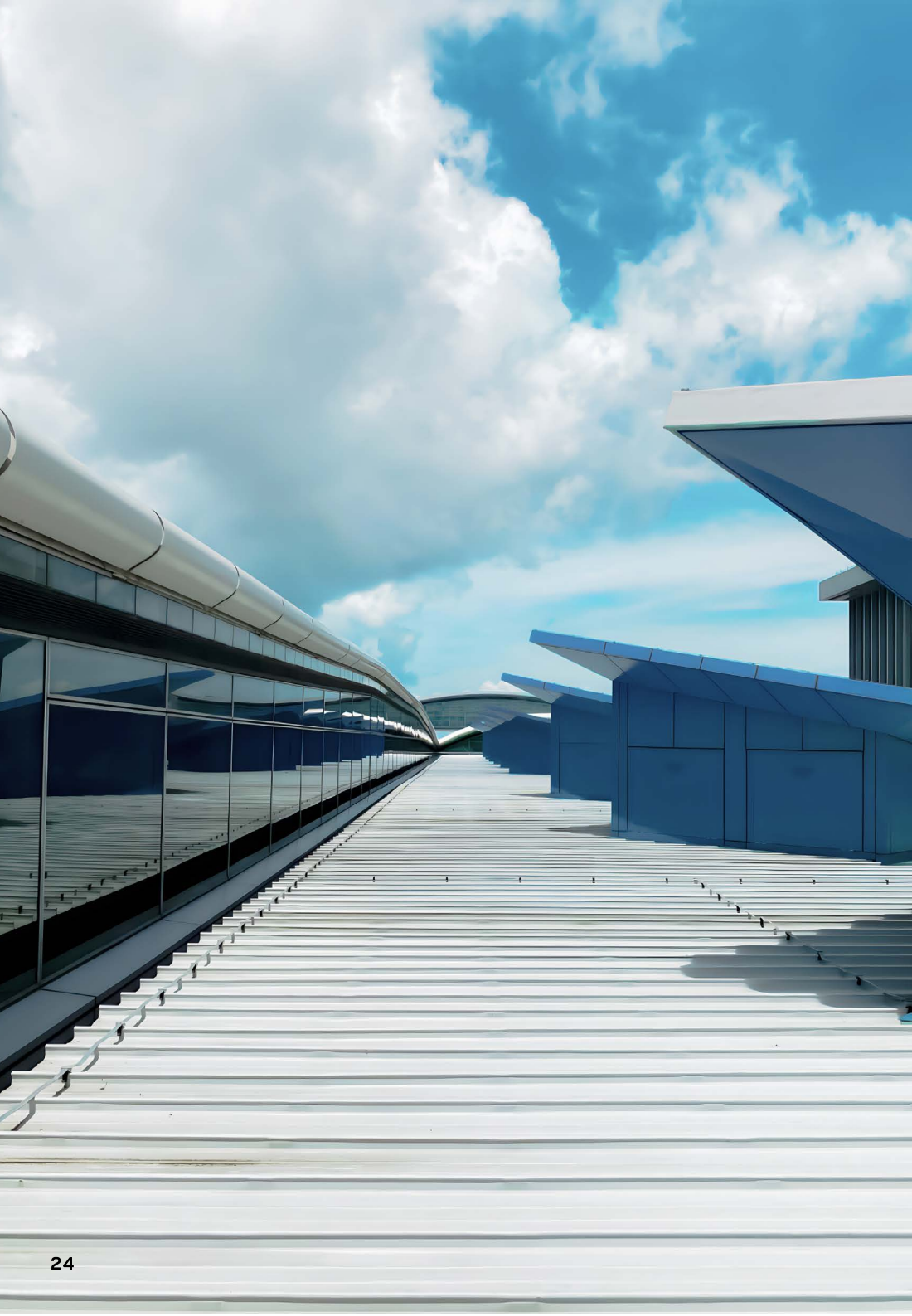
# P0011

Non-Combustible Roofing and  
Expansion Work at the Hong Kong  
International Airport

---

<b>Location</b>	Hong Kong International Airport, Contract P583 - T1 Annex Building and Carpark 4
<b>Client</b>	Leighton Contractors (Asia) Ltd.
<b>Architect</b>	Benoy Ltd.
<b>Structural</b>	Meinhardt (C&S) Ltd.
<b>Quantity</b>	6,000 (m <sup>2</sup> )
<b>Project Date</b>	2018 - 2019

---



**Job Scope**

Design, Fabrication, Supply and Installation of Metal Standing Seam Aluminium Roof Cladding System (Non-combustible), Skylight, Claddings and Fall Arrest System

# P0014

Rectification Works of Shopfront for  
Carl F. Bucherer

---

**Location** Carl F. Bucherer at No. 58 Russell  
Street, Hong Kong

**Client** Carl F. Bucherer

**Consultant** Inhabit Asia Ltd.

**Quantity** 30 (m<sup>2</sup>)

**Project Date** 2018

---

## Job Scope

Supply, Fabrication and Installation of  
Aluminium/ EPDM Flashing and Installation of  
Laminam 3+ Porcelain Tile Panels and Fabric  
Signage (6.8m x 25m)



# P0017

InnoCell, Hong Kong Science Park,  
first high-rise MiC building in  
Hong Kong

---

**Location** HKSTP InnoCell Residential  
Institution, Junction of Chong San  
Road and Science Park Road, Pak  
Shek Kok, Tai Po, N.T. - TPTL 245

**Client** Hip Hing Engineering Co., Ltd.

**Architect** Leigh & Orange Ltd.

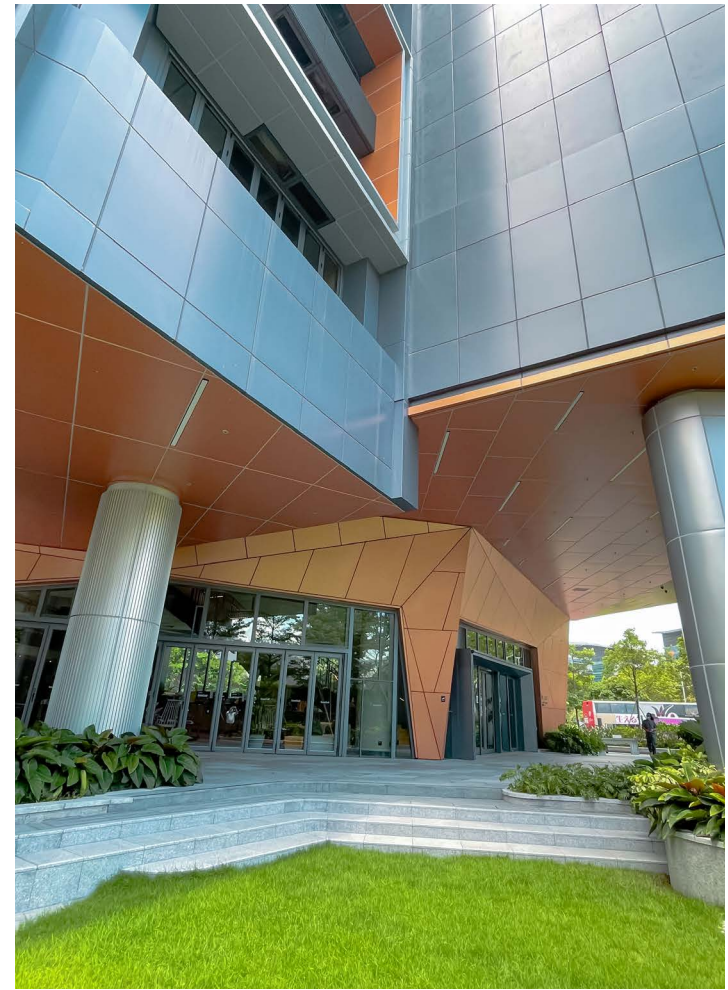
**Structural** WSP Hong Kong Ltd.

**Quantity** 7,000 (m<sup>2</sup>)

**Project Date** 2019 - 2020

---





**Job Scope**

Design, Supply, Fabrication and Installation of MiC Curtain Wall, Glass Wall, Balustrade, Folding Window, Louvre, Fire Rated Glass, Aluminium Cladding, Windproof Ceiling

# P0018

## Alternatives and Addition Works for Residential Development at Sung On Street

### Job Scope

Design, Supply, Fabrication and Installation of Aluminium External Ceiling at G/F and 2/F

---

<b>Property Name</b>	Upper East
<b>Location</b>	Residential Development at 23 Sung On Street, Hung Hom, Kowloon
<b>Client</b>	Kowloon Development Engineering Ltd.
<b>Architect</b>	ARK Associates Ltd.
<b>Structural</b>	David S. K. Au & Associates Ltd.
<b>Quantity</b>	800 (m <sup>2</sup> )
<b>Project Date</b>	2019 - 2020

---



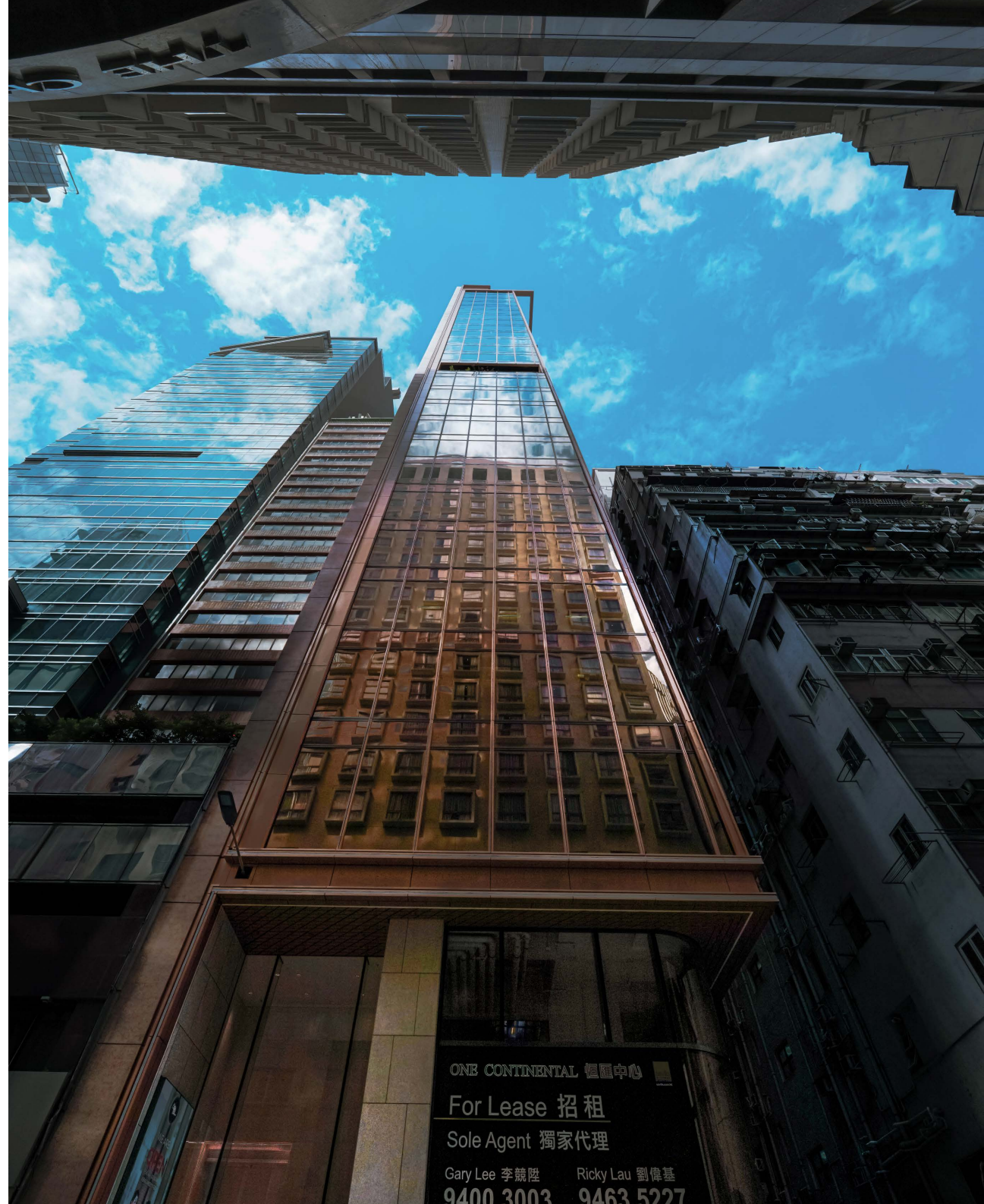
# P0020

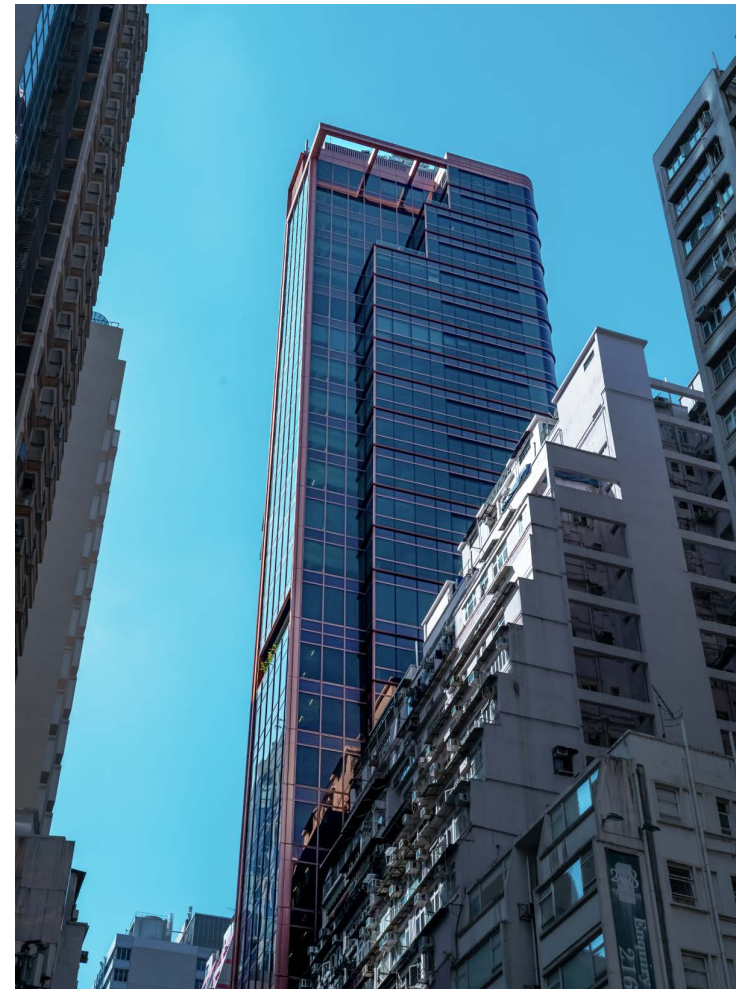
Proposed Commercial Development  
at Wan Chai Road, Hong Kong

---

<b>Property Name</b>	One Continental
<b>Location</b>	M.L. 124 R.P. at No. 232 Wan Chai Road, Hong Kong
<b>Client</b>	Pacific Gate Investment Ltd.
<b>Architect</b>	KLS International Architects & Planners Co., Ltd.
<b>Structural</b>	Leadtops Raymond Ltd.
<b>Quantity</b>	11,000 (m <sup>2</sup> )
<b>Project Date</b>	2019 - 2022

---





**Job Scope**

Design and Build of Unitized Curtain Wall System, Stone Pattern Cladding, Glass Wall, Glass Balustrade, Louvre and Windproof Ceiling

# P0022

Site Formation and Infrastructure  
Provision for Temporary Quarantine  
Facilities at Pat Heung Junior Police  
Permanent Activity Centre

---

**Location** Junior Police Permanent Activity  
Centre and Integrated Youth Training  
Camp, Pat Heung, Hong Kong

**Client** Hip Hing Engineering Co., Ltd.

**Architect** Architectural Services Department

**Quantity** 300 (m<sup>2</sup>)

**Project Date** 2020

---





**Job Scope**

Design and Build of Aluminium Windows for 120 MiC Containers

# P0024

Design and Construction of  
Temporary Quarantine Facilities at  
Penny's Bay, Lantau Island

---

<b>Location</b>	Penny's Bay (Phase IIIA), Lantau Island, New Territories, Hong Kong
<b>Client</b>	Hip Hing Engineering Co., Ltd.
<b>Architect</b>	Architectural Services Department
<b>Structural</b>	WSP Hong Kong Ltd.
<b>Quantity</b>	25,000 (m <sup>2</sup> )
<b>Project Date</b>	2020

---





**Job Scope**

Design and Build of Aluminium Windows, Cladding, Metal Roofing, Signage and 3M Graphics for 857 MiC quarantine units and 9 ancillary buildings of 45 MiC quarantine units, amounting to a grand total of 902 MiC units

# P0025

Design and Build MiC for Yue-Ji Yuan  
Administrative Office

---

**Location** Longhua District, Shenzhen, China

**Client** 深圳市时代园林花卉有限公司

**Developer** 深圳市时代园林花卉有限公司

**Designer** Zenith Group

**MiC** 16 units

**Project Date** 2020

---





**Job Scope**

Design and Build MiC Containers with Internal Fitting-Out

# P0026

Design, Supply and Installation for the External Aluminium Cladding Package for Student Residence at the University of Hong Kong

---

<b>Location</b>	HKU WCH Student Residence at Police School Road, Wong Chuk Hang, Hong Kong
<b>Client</b>	Paul Y. Curtain Wall and Aluminium Works Co., Ltd.
<b>Architect</b>	Architecture Design and Research Group Ltd.
<b>Structural</b>	AECOM
<b>Quantity</b>	25,000 (m <sup>2</sup> )
<b>Project Date</b>	2020 - 2023 (Expected)

---





**Job Scope** Design and Build of Aluminium Cladding for 900 MiC Containers, Glass Wall, Aluminium Fins, Aluminium Louvres, Glass Balustrade and Roof Feature for Tower Buildings

Glass wall, Metal Cladding, and Glass Balustrade for Podium Building

# P0027

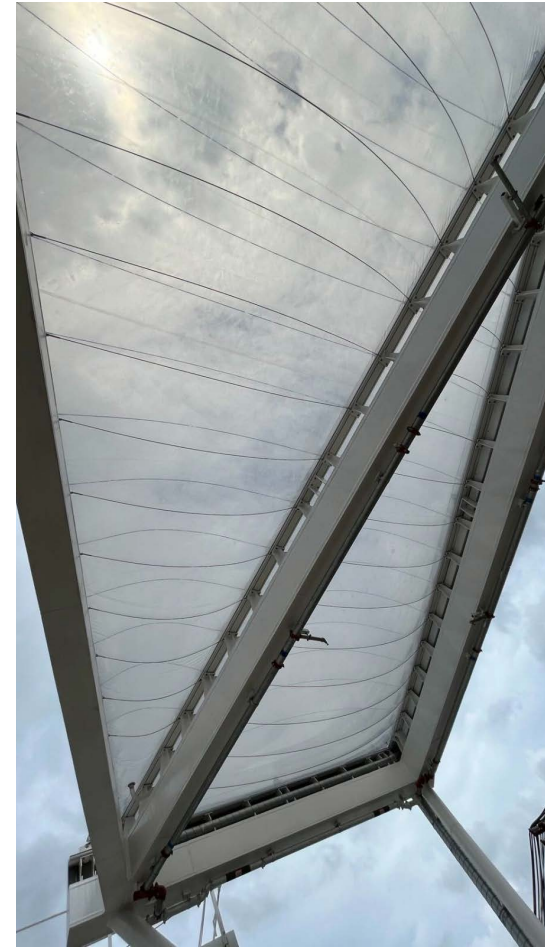
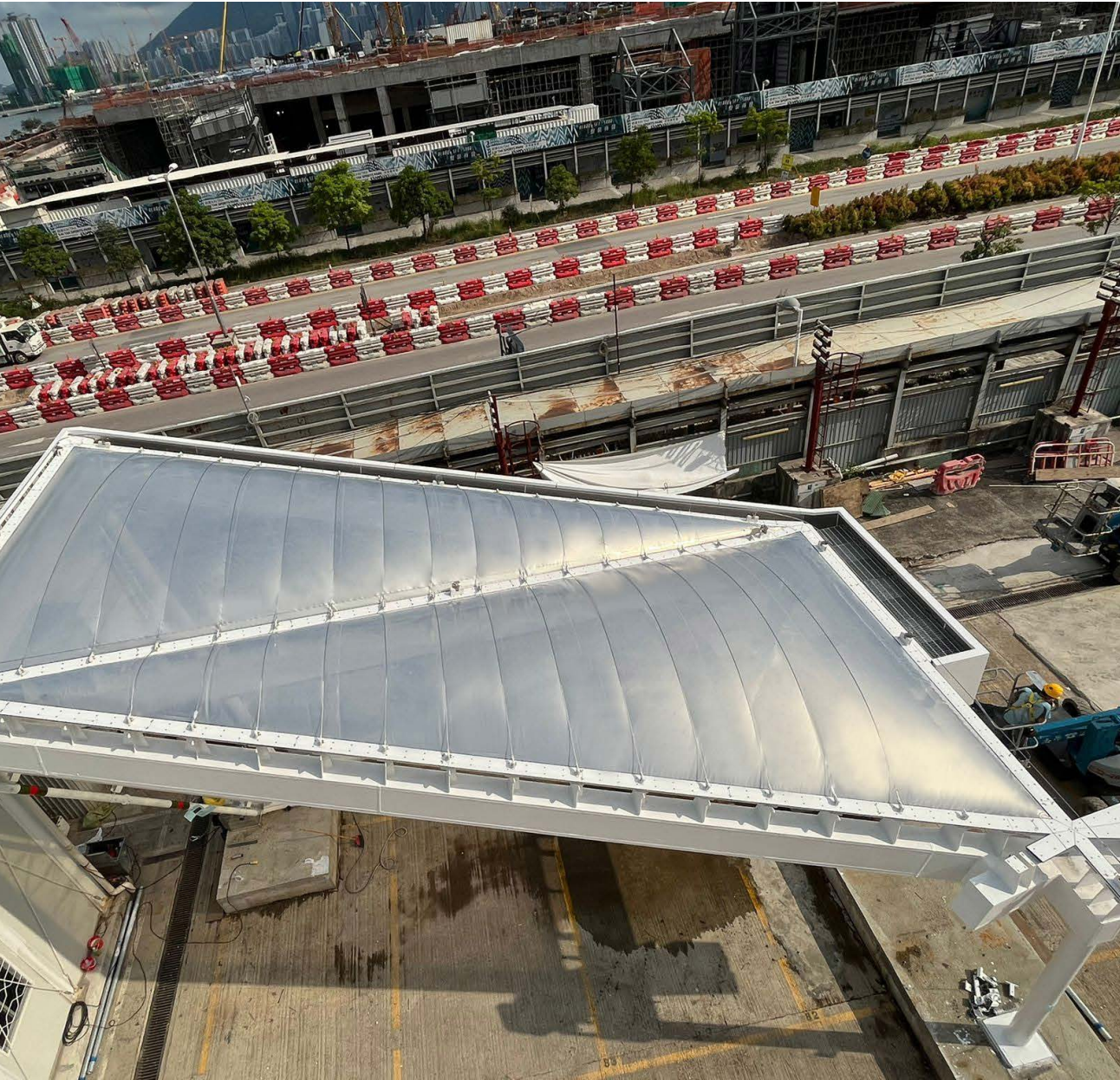
## Design and Construction of Kai Tak Sports Park

---

<b>Location</b>	Kai Tak, Kowloon City District, Kowloon, Hong Kong
<b>Client</b>	Hip Hing Engineering Co., Ltd./Kai Tak Sports Park Ltd.
<b>Architect</b>	Populous Design Pty Ltd.
<b>Structural</b>	Arup Group
<b>Quantity</b>	6,800 (m <sup>2</sup> )
<b>Project Date</b>	2021 - 2023 (Expected)

---





**Job Scope**

Design, Supply and Installation of ETFE Canopy with structural steel and ETFE system



# P0030

Roofing System for United Court Transition House

---

<b>Location</b>	United Court Transition House at Tung Tau, Yuen Long, NT
<b>Client</b>	Hip Hing Engineering Co., Ltd.
<b>Architect</b>	Andrew Lee King Fun & Associates Architects Ltd.
<b>Structural</b>	Arcadis Design & Engineering Ltd.
<b>Quantity</b>	9,500 (m <sup>2</sup> )
<b>Project Date</b>	2021 - 2022

---



### Job Scope

Design and Supply of corrugated metal sheet roofing with ultra-thin insulation





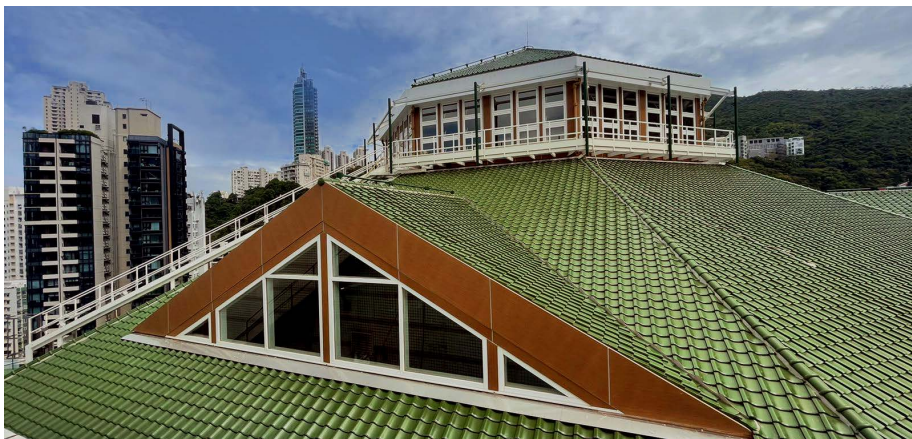
# P0031

Design and Build Roofing System for  
Happy Valley Old Clubhouse

---

<b>Location</b>	25 Shan Kwong Road, Hong Kong (The Hong Kong Jockey Clubhouse) - I.L. 8204
<b>Client</b>	Hip Hing Construction Co., Ltd.
<b>Architect</b>	Aedas
<b>Structural</b>	Arup
<b>Quantity</b>	6,800 (m <sup>2</sup> )
<b>Project Date</b>	2021 - 2022

---



**Job Scope**

Design, Supply and Installation of Roofing Layers, Electric Operate Windows, Glass Wall and Wooden-Pattern Aluminium Cladding

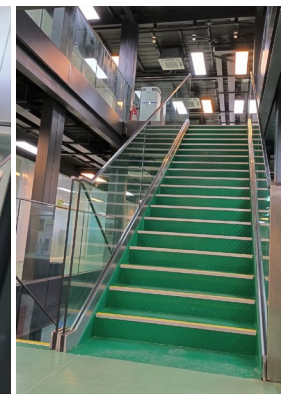
# P0034

MiC Module for PM's Site  
Accommodation of Development of  
Lok Ma Chau Loop: Main Works  
Package 1 - Contract 1 Site  
Formation and Infrastructure Works

---

<b>Location</b>	Lok Ma Chau Loop and Western Connection Road Phase 1
<b>Client</b>	CRCC-KL-PY JV
<b>Architect</b>	Aecom
<b>Quantity</b>	5,800 (m <sup>2</sup> )
<b>Project Date</b>	2021 - 2023 (Expected) *On hold during Covid Pandemic from 2021-2023
<b>Total MiC Qty</b>	202 Units

---





### **Job Scope**

Design and Build of PM's Office using Modular Integrated Construction (MiC) Method

匠心未來 | 煥演昔貌  
Creating the Future | Retrofitting the Past



#### HONG KONG HEAD OFFICE

Unit 7, 6/F, Westin Centre  
No. 26, Hung To Road  
Kwun Tong, Kowloon,  
Hong Kong.

T: (852) 2156 1680  
F: (852) 2156 1678  
E: [general@zenithpms.com](mailto:general@zenithpms.com)



#### MYANMAR OFFICE

Suite 01-05, 7/F,  
Myanmar Centre Tower 1,  
192 Kabr Aye Pagoda Road,  
Bahan Township,  
Yangon, Myanmar.

#### CAMBODIA OFFICE

One Park E21,  
Phom Penh City Center,  
No.58, Street R8, Sangkat Srah Chak, Khan  
Doun Penh, Phnom Penh, Cambodia.